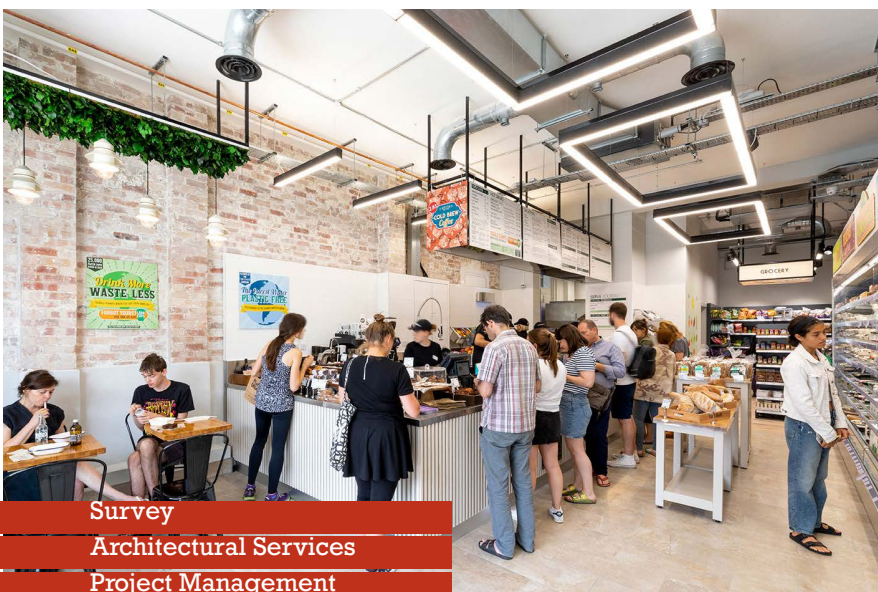


◁ designtime

# Project Profile



Survey  
Architectural Services  
Project Management  
Contractor Management

Client:  
Planet Organic

Location:  
Queens Park, London

Project:  
Our latest store format for leading organic supermarket in North West London featuring key product focus areas; food to go, with hot food, salads and healthy fresh juice refreshments available to eat within the cafe area or to take away. The store has a large range of organic produce including the influential unpackaged range of store cupboard essentials, organic fruit and vegetables, a natural health and beauty section and plenty of eco living products for the home.

Project Scope:  
Design Time have worked with the Planet Organic retail team for over 5 years, providing design, architectural and project management services .

During this time the emphasis has been upon the development of an immersive store environment that increases dwell time, and encourages healthy living.

Programme:  
9 Months Design and Planning.

Project Size:  
800 sqM typically

Contact:

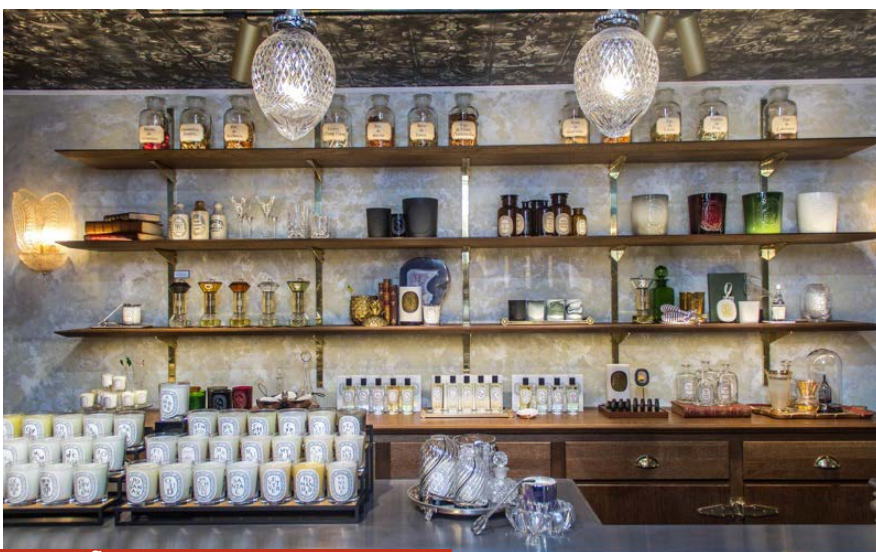
Tel: +44 (0) 113 244 2602  
adt@designtime.uk.com

Design Time Limited.  
3a Calls Landing, The Calls,  
Leeds, England  
LS2 7EW

[www.designtime.uk.com](http://www.designtime.uk.com)



# Project Profile



Survey

Implementation Design

Project Management

Flagship Store Development

**Client:**

Diptyque

**Location:**

Floral Street, Covent Garden.

**Project:**

Complete refit of the London retail flagship store for this luxury candle and fragrance company.

The brand is also represented in key department store locations, and in 2019 Design Time have created concession stores within the new Harrods Beauty Hall and Liberty and Co.

**Project Scope:**

Working with the Paris based concept team, Design Time was responsible for the design management, architectural and PM services bringing together the team to deliver the project.

**Programme:**

8 Months Design and Planning.

**Project Size:**

130 sqM

**Contact:**

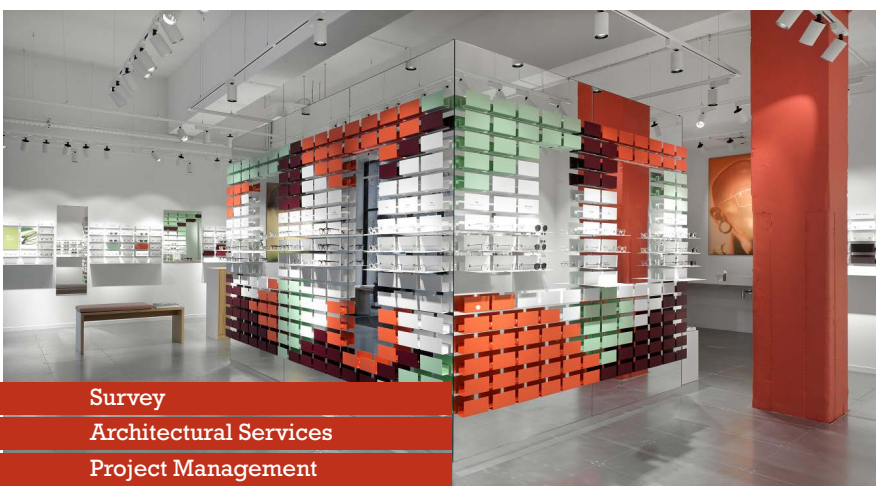
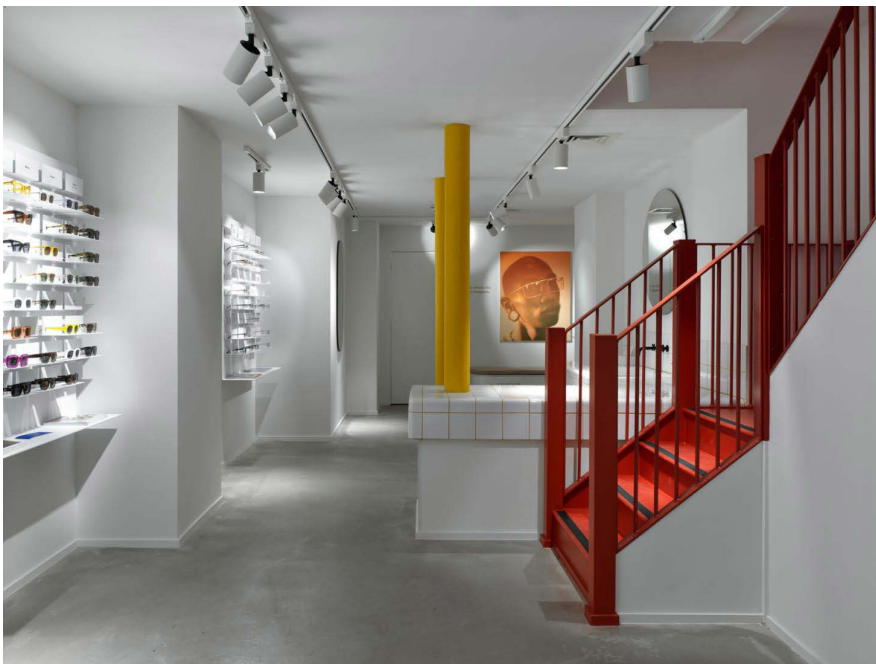
Tel: +44 (0) 113 244 2602  
adt@designtime.uk.com

Design Time Limited.  
3a Calls Landing, The Calls,  
Leeds, England  
LS2 7EW

[www.designtime.uk.com](http://www.designtime.uk.com)



# Project Profile



Survey

Architectural Services

Project Management

Contractor Management

Client:  
ace & tate

Location:  
Locations across UK & Ireland.

Project:  
The implementation of the successful brand concept and identity to a diverse range of properties in various locations in London and the first store in Ireland. The roll-out continues for this Dutch on-trend eyewear retailer.

We have completed stores in Soho, Covent Garden, Bristol, Manchester and Dublin during 2018.

Project Scope:  
Working with the Ace & Tate concept team, Design Time provided design, architectural and project management service. Works included structural modifications, staircase installations, and extensive mechanical and electrical services.

Programme:  
6 Months Design and Planning.

Project Size:  
300 sqM typically

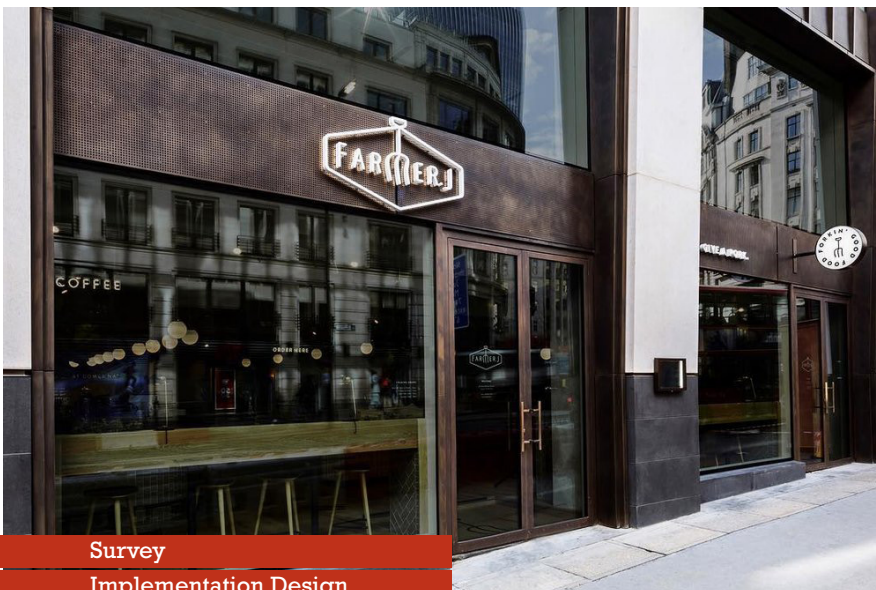
Contact:

Tel: +44 (0) 113 244 2602  
adt@designtime.uk.com

Design Time Limited.  
3a Calls Landing, The Calls,  
Leeds, England  
LS2 7EW

[www.designtime.uk.com](http://www.designtime.uk.com)

# Project Profile



Survey

Implementation Design

Project Management

Contractor Management

Client:  
Farmer J

Location:  
King William Street, City of  
London.

Project:  
Construction of the second  
restaurant at the heart of the  
City, evolving from the first  
restaurant at Leadenhall.

Project Scope:  
Working with the concept team,  
Design Time was responsible  
for the design management,  
architectural and project  
management services for the  
project.

We also brought together the  
team to deliver the project.

Works included structural  
modifications, formation of  
high-quality kitchen and bar  
facilities, a great versatile  
front-of-house area and  
extensive mechanical and  
electrical services.

Programme:  
8 Months Design and  
Planning.

Project Size:  
250 sqM

Contact:

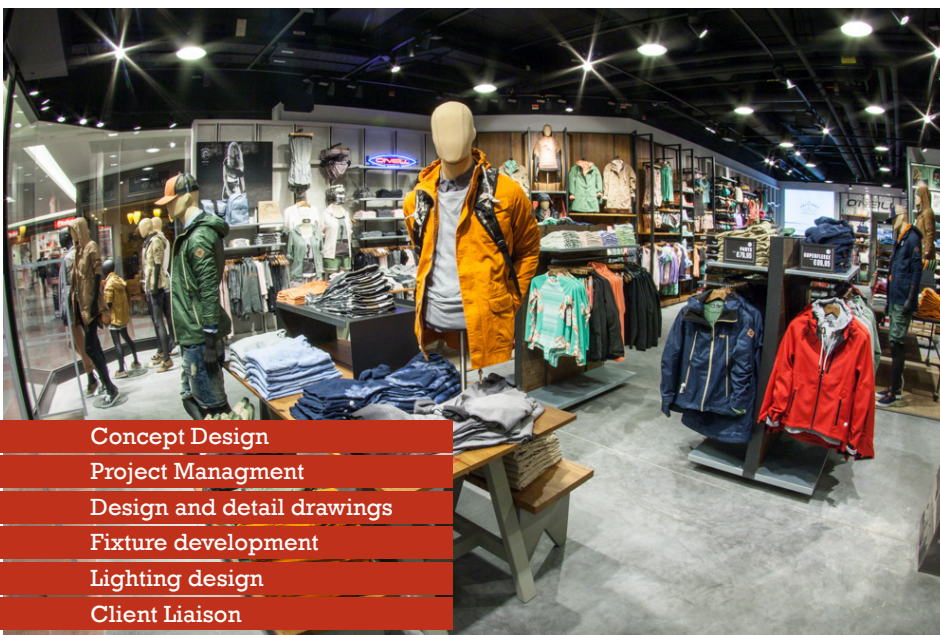
Tel: +44 (0) 113 244 2602  
adt@designtime.uk.com

Design Time Limited.  
3a Calls Landing, The Calls,  
Leeds, England  
LS2 7EW

[www.designtime.uk.com](http://www.designtime.uk.com)



# Project Profile



- Concept Design
- Project Management
- Design and detail drawings
- Fixture development
- Lighting design
- Client Liaison

Client:  
O'Neill

Location:  
Wijnegem, Belgium

Project:  
Concept development, detailed design and construction management of a new concept store for O'Neill in Wijnegem. Design Time have completed stores across the globe for O'Neill.

Locations include Hamburg, Dresden, Dortmund + Oberhausen in Germany; Rotterdam in Netherlands; Koksijde, Brugge, and Gent in Belgium; Hong Kong, Sydney, Peru and Okinawa in Japan

Design Time have undertaken Outlet stores in Pandorf Austria; Annapol Poland; Berlin + Wolfsburg in Germany; Rosada + Leystad in Netherlands; and Luxemburg. Additionally we have also developed a SIS system solution for Spain France, Belgium, Switzerland and China.

Project Scope:  
Our role involved the design development of specialist fixtures and fittings and the design management of this store according to brand guidelines.

Working regularly with O'Neill we were also responsible for all client liaisons and the day to day management of the construction program.

Contact:

Tel: +44 (0) 113 244 2602  
mail@adesigntime.com

Design Time Limited.  
3A Calls Landing, The Calls,  
Leeds, England  
LS2 7EW

[www.designtime.uk.com](http://www.designtime.uk.com)



# Project Profile



- Survey
- Architectural Services
- Project Management
- Contractor Management

Client:  
Joe & The Juice

Location:  
Locations across London.

Project:  
The implementation of the successful brand concept and identity to a diverse range of metropolitan properties.

We have completed outlets at North Audley St, Mayfair and Kings Road amongst a number during 2019 to a new design concept for the Danish coffee and juice super-brand with over 250 outlets worldwide.

Project Scope:  
Working with the Joe & The Juice concept team, Design Time provided design, architectural and project management services .

Works included structural modifications, staircase installations, and extensive mechanical and electrical services including specialist systems.

Programme:  
6 Months Design and Planning.

Project Size:  
300 sqM typically

Contact:

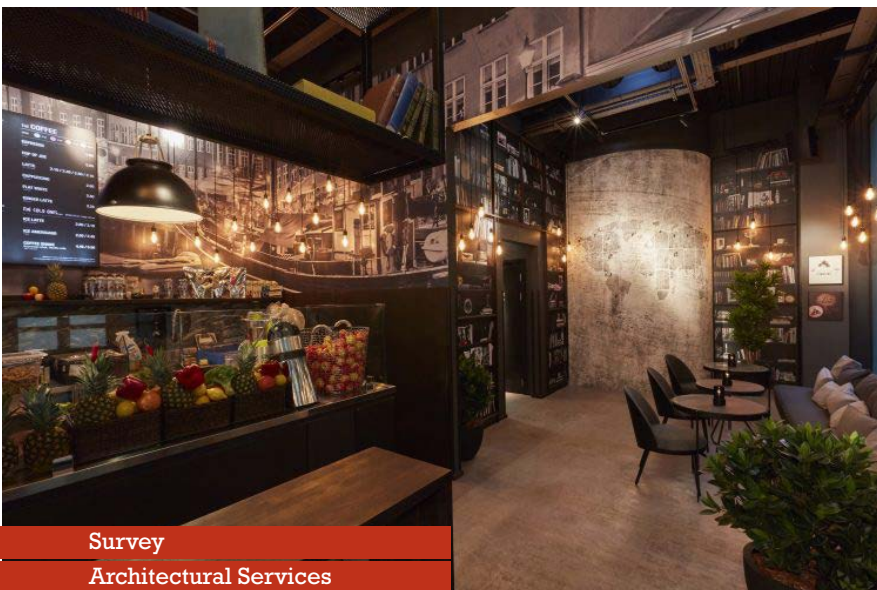
Tel: +44 (0) 113 244 2602  
adt@designtime.uk.com

Design Time Limited.  
3a Calls Landing, The Calls,  
Leeds, England  
LS2 7EW

[www.designtime.uk.com](http://www.designtime.uk.com)



# Project Profile



Survey

Architectural Services

Project Management

Contractor Management

Client:  
Joe & The Juice

Location:  
Locations across London.

Project:  
The implementation of the successful brand concept and identity to a diverse range of metropolitan properties.

We have completed outlets at Chiswick, Wimbledon, Tower 42 and on Rathbone Place and Fulham Road, amongst others, during 2018 for the Danish coffee and juice super-brand with over 250 outlets world-wide.

Project Scope:  
Working with the Joe & The Juice concept team, Design Time provided design, architectural and project management service .

Works included structural modifications, staircase installations, and extensive mechanical and electrical services including specialist systems.

Programme:  
6 Months Design and Planning.

Project Size:  
300 sqM typically

Contact:

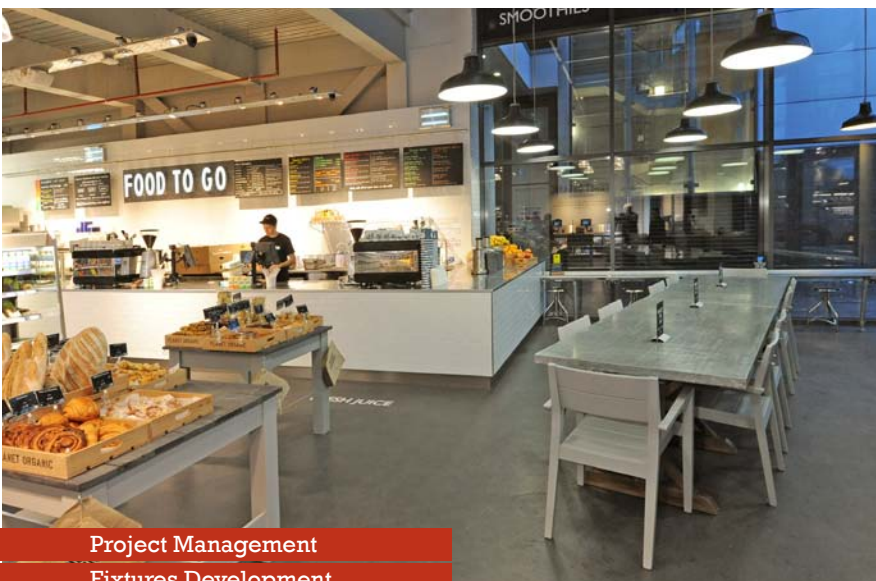
Tel: +44 (0) 113 244 2602  
adt@designtime.uk.com

Design Time Limited.  
3a Calls Landing, The Calls,  
Leeds, England  
LS2 7EW

[www.designtime.uk.com](http://www.designtime.uk.com)



# Project Profile



Project Management

Fixtures Development

Architectural Services

Cost Management

## Client:

Planet Organic

## Location:

Southside, Wandsworth.

## Project:

Planet Organic are a speciality retailer catering for ethically aware consumers, emerging and engaging them in the quality of the merchandise through sampling and other experiential and tactile ways.

## Project Scope:

Custom-designed fixtures and fittings set in a contemporary retail environment conveying brand values of food quality, supply chain credibility and freshness. At the point of sale, check-outs are designed to be simple to use and customer friendly in operation.

Speciality areas for the sale of high value produce, such as skin treatment, nutrition and beauty products feature within the store.

The Food to Go area creates a tranquil area to relax and take a break, and encourage regular usage of the store by local community.

Design Time provided a complete service from concept, through detailed design to execution.

## Programme:

6 Months Design and Planning, including 10 week fit-out period.

## Contact:

Tel: +44 (0) 113 244 2602  
mail@adesigntime.com

Design Time Limited.  
3A Calls Landing, The Calls,  
Leeds, England  
LS2 7EW

[www.designtime.uk.com](http://www.designtime.uk.com)



# Project Profile



Client:  
Byredo

Location:  
Lexington Street, Soho.

Project:  
Construction of the exquisite high-end retail space and head office with ancillary areas on the corner of Lexington Street and Beak Street.

Project Scope:  
Working with the Stockholm based concept team, Design Time was responsible for the design management, architectural and PM services bringing together the team to deliver the project.

Works over six floor levels included extensive structural modifications to remodel the retail areas, a dramatic feature staircase and infinity lift, a versatile gallery space and works to the exterior.

Complex systems for electrics, lighting, security, mechanical plant and audio/visual were installed throughout.

Other recent West End flagship stores completed by Design Time include Lush on Oxford St, LEGO on Leicester Square, Space NK on Regent St, and ASICS on Oxford St.

Programme:  
18 Months Design and Planning.

Project Size:  
600 sqM over 6 floors

Contact:

Tel: +44 (0) 113 244 2602  
adt@designtime.uk.com

Design Time Limited.  
3a Calls Landing, The Calls,  
Leeds, England  
LS2 7EW

[www.designtime.uk.com](http://www.designtime.uk.com)

Survey

Implementation Design

Project Management

Flagship Store Development



# Project Profile



Client:  
Lush

Location:  
Castle Lane, Belfast.

Project:  
Construction of the Belfast Flagship store on a prominent corner location at the heart of the city's shopping district.

The store features a custom made 35m long traditional hardwood shopfront on two elevations restoring the former splendour to the property.

We have also completed stores in Derby, Warrington, Hull and Solihull during 2018.

Project Scope:  
Working with the Lush concept team, Design Time was responsible for shopfront design and for the architectural and project management services for the whole project.

Project included structural modifications, lift installation, and extensive mechanical and electrical services

Programme:  
10 Months Design and Planning.

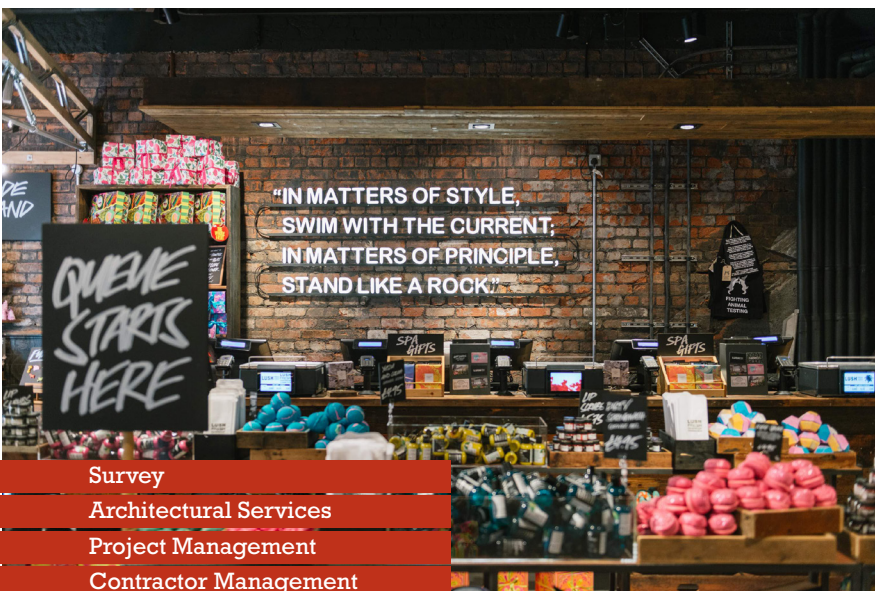
Project Size:  
500 sqM over 6 floors

Contact:

Tel: +44 (0) 113 244 2602  
adt@designtime.uk.com

Design Time Limited.  
3a Calls Landing, The Calls,  
Leeds, England  
LS2 7EW

[www.designtime.uk.com](http://www.designtime.uk.com)



- Survey
- Architectural Services
- Project Management
- Contractor Management



# Project Profile



**Client:**

Natoora

**Location:**

Pavilion Road, Chelsea.

**Project:**

Natoora are a speciality retailer catering for ethically aware consumers, immersing and engaging them in the quality of the merchandise through sampling and other experiential and tactile ways.

**Project Scope:**

Custom-designed fixtures and fittings set in a contemporary retail environment conveying brand values of food quality, supply chain credibility and freshness.

Speciality areas for demonstrating product and engaging with customers.

Design Time provided a complete service from concept, through detailed design to execution.

**Programme:**

6 Months Design and Planning, including 10 week fit-out period.

**Project Size:**

200sq M

**Contact:**

Tel: +44 (0) 113 244 2602  
mail@adesigntime.com

Design Time Limited.  
3A Calls Landing, The Calls,  
Leeds, England  
LS2 7EW

[www.designtime.uk.com](http://www.designtime.uk.com)

Project Management

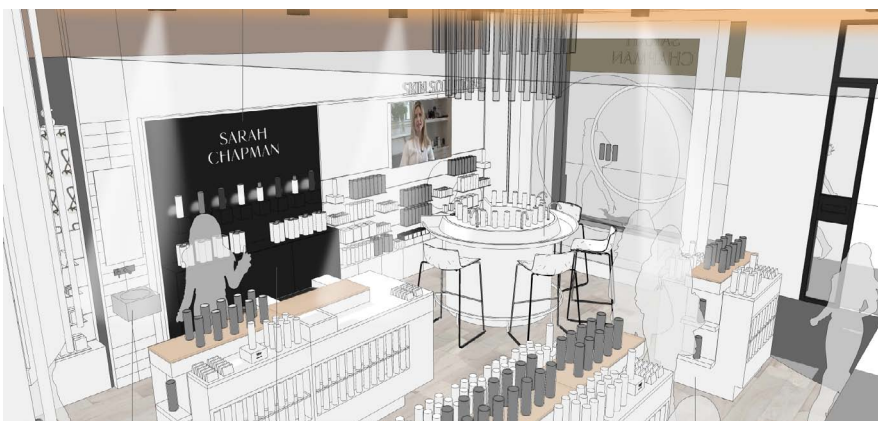
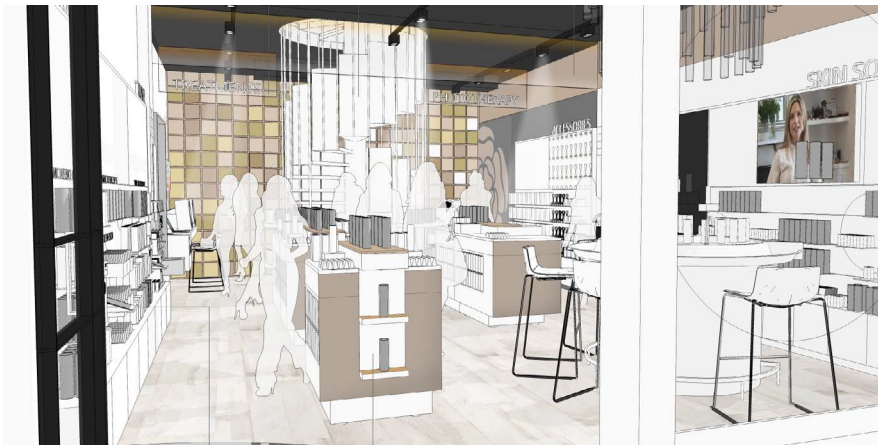
Fixtures Development

Architectural Services

Cost Management



# Project Profile



**Client:**  
Sarah Chapman

**Location:**  
off Sloane Square

**Project:**  
DesignTime were approached by Sarah Chapman to create design concepts and branding for a flagship store in Sloane Street.

Our expertise with other key brands in this market sector was key to securing a landmark premises with Cadogan Estates.

**Project Scope:**  
DesignTime provide a comprehensive architectural services package from survey through store planning services.

Full 3D renders with retail walk through was a key requirement for this relatively unproven retail operator.

**Programme:**  
3 Months Design and Store Planning.

**Project Size:**  
300 sqM

**Contact:**

Tel: +44 (0) 113 244 2602  
adt@designtime.uk.com

Design Time Limited.  
3a Calls Landing, The Calls,  
Leeds, England  
LS2 7EW

[www.designtime.uk.com](http://www.designtime.uk.com)

Survey

Store Design

Detail Drawings

Architectural Services